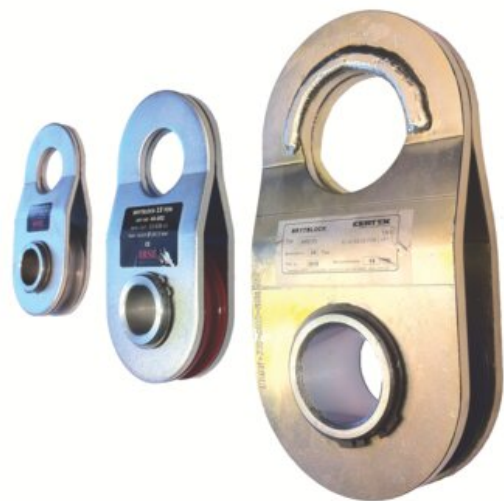


## Snatch Block MBL



### Product information



**General:** Intended for general pulling purposes, optimal for towing vehicles. To be used with wire rope.

**Design:** The block opens by twisting the cover plates. Eye can be connected to hook, shackle etc.

**Material:** Cover plates of construction steel, aluminium sheave for 5-ton and 10-ton block, steel sheave for 13

**Marking:** Breaking load, max rope diameter

**Finish:** Electro-galvanized

Part Code	Breaking Load ton	Rope Ø range mm	A mm	B mm	D mm	E mm	L mm	T mm	Weight kg	Delivery time
494100800020	5	6-8	34	17	70	62	140	11	0.85	10
494100950020	10	8-9.5	50	25	100	90	200	12	1.9	10
494101400020	13.6	11-14	60	32	125	108	250	25	4.8	10

# Blueprint

