



## Lifting Eye TAPG/TAPG-S

### Product information

The eyes can be loaded with working load limit in all directions. All the eyes are pivoted to avoid breakage in the eyes, which also make it possible to fold it aside when it is not used.

**Model TAPG:** Lifting D-Ring and Bridge - without Screws.

**Model TAPG-S:** Lifting D-ring, bridge and 2 screws 8.8 EN 24014 (DIN 931)

Attachment-point, bolt-on type, in working load limits of 3 - 8 t.

#### Features:

- Compact design
- Secured four times against breakage
- Working range 120°
- Bolt on plate also serves as marking stencil

The D-link must be able to move freely. The load take-up may not be supported on edges or on the sling point.

**Material:** Eye of alloy steel.

**Marking:** WLL.

**Note:** The surface that the lifting eyes shall be attached to shall be flat and tolerate the load it is going to be exposed to.

**Warning:** Only screws with a minimum strength class of 8.8 EN 24014 (DIN 931) may be used

**Safety factor:** 4:1

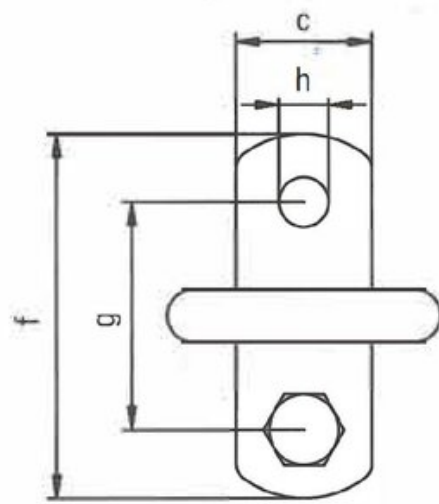
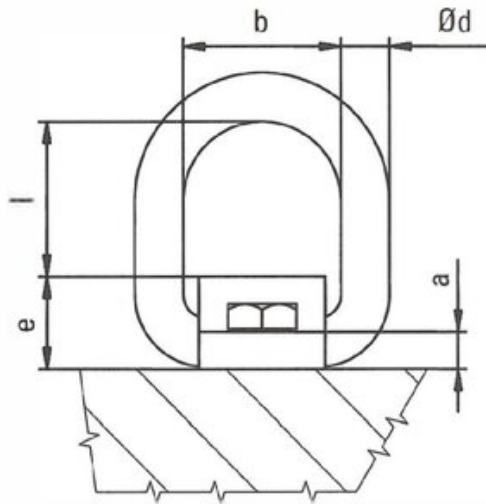
| Part Code      | Code   | WLL ton | Thread mm | Torque Nm | a mm | b mm | c mm | Ø d mm | e mm | f mm | g mm | h mm | l mm | Weight kg | Delivery time |
|----------------|--------|---------|-----------|-----------|------|------|------|--------|------|------|------|------|------|-----------|---------------|
| 42150380503200 | TAPG 3 | 3.15    | M20       | 210       | 12   | 56   | 50   | 18     | 34   | 130  | 90   | 21   | 51   | 1.08      | 5             |
| 42150380505200 | TAPG 5 | 5.3     | M24       | 290       | 15   | 67   | 60   | 22     | 42   | 160  | 110  | 25   | 63   | 2.04      | 5             |
| 42150380508200 | TAPG 8 | 8       | M27       | 550       | 20   | 80   | 70   | 26     | 55   | 190  | 130  | 28   | 67   | 3.58      | 5             |

## Technical data

WLL (ton)

|      |      |      |   |
|------|------|------|---|
| □    | □    | □    | □ |
| 3.15 | 4.75 | 4.25 |   |
| 5.3  | 8    | 7.1  |   |
| 8    | 12   | 11.2 |   |

# Blueprint



Anschlagart  
 kind of attachment

Stück / number of pieces  
 Neigungswinkel  
 inclination angle

| Bezeichnung<br>Code | Nominal W.L.<br>mm W.L. | 0°                            |                               | 0°-45°                        |                               | 45°-60°                       |                               | Schraube<br>nutriv | Anschluß-<br>moment<br>tightening<br>torque |
|---------------------|-------------------------|-------------------------------|-------------------------------|-------------------------------|-------------------------------|-------------------------------|-------------------------------|--------------------|---|
|                     |                         | Working load<br>limit<br>W.L. | Working load<br>limit<br>W.L. | Working load<br>limit<br>W.L. | Working load<br>limit<br>W.L. | Working load<br>limit<br>W.L. | Working load<br>limit<br>W.L. |                    |   |
| FAPG- $\beta$       | 3.15                    | 4.75                          | 9.5                           | 4.25                          | 3.15                          | 6.7                           | 4.75                          | M20                | 210   |
| FAPG- $\beta$       | 5.5                     | 8                             | 16                            | 7.5                           | 5.5                           | 11.2                          | 8                             | M24                | 290   |
| FAPG- $\alpha$      | 8                       | 12                            | 24                            | 11.2                          | 8                             | 17                            | 13.8                          | M27                | 350   |

Anschlagart  
 kind of attachment

Stück / number of pieces  
 Neigungswinkel  
 inclination angle

Anschlagart  
 kind of attachment

Stück / number of pieces  
 Neigungswinkel  
 inclination angle